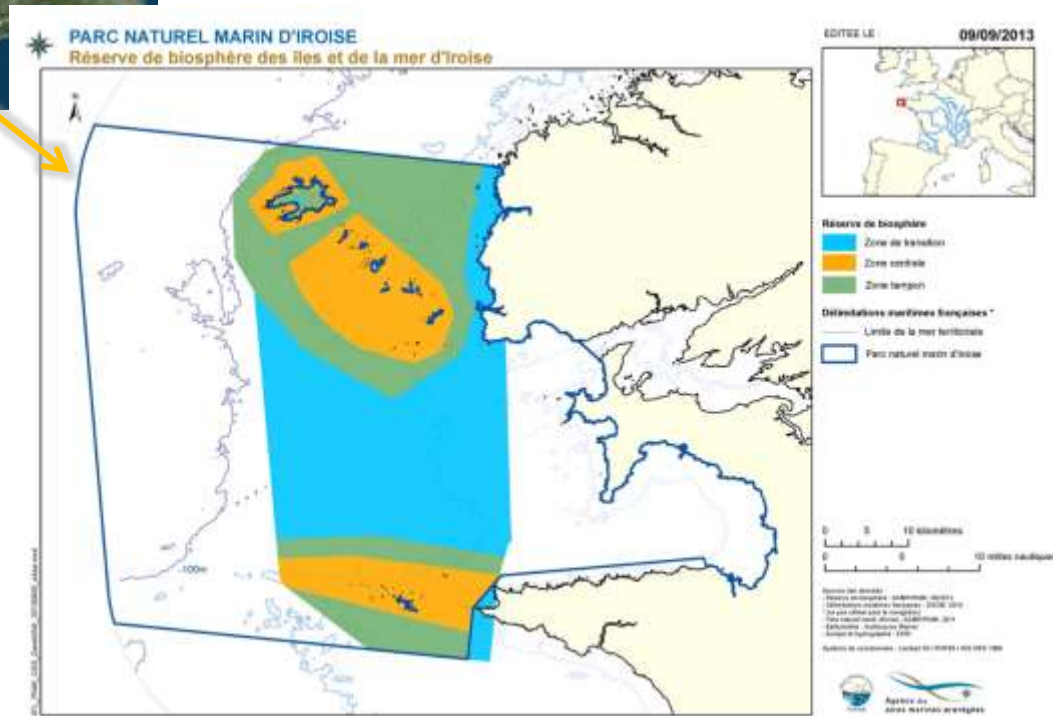


# Iroise Sea and Islands biosphere Reserve



- ✓ Created in 1988 and reviewed by MAB in 2012
- ✓ 3 main inhabited islands: Ouessant, Molène & Sein
- ✓ 166,202 ha
- ✓ 2% land and the rest of sea
- ✓ 1,243 inhabitants in 2014



Co-managed by




PROJECT MANAGERS:  
 Camille Bélurier      Marie Hascoët & Margaux Pinel

PROJECT COORDINATORS :  
 Jérémie Bourdoulous      Philippe Le Niliot

## RBIMI actions:

- ✓ Conservation of landscapes, ecosystems and species
- ✓ Promotion of cultural identity and heritage
- ✓ Development of sustainable activities to keep a working population on the islands the whole year
- ✓ Limitation of environmental impact of tourism flows
- ✓ Testing a new governance method for better appropriation
- ✓ Environmental awareness, education and research



Some examples:  
Charter of best practices for marine exploration



New farming project on island



Collection and promotion of the professional fishermen's daily life and stories



Annual competition for local initiatives

## BCHT project, a lever for RBIMI to:



- ✓ Make the BR an attractive place in favour of local stakeholders
- ✓ Bring the eco-engaged stakeholders together and create a charter for all
- ✓ Develop tourism projects for local economic development
- ✓ Manage better tourist flows in islands and sea to reduce the pressure on some natural areas