



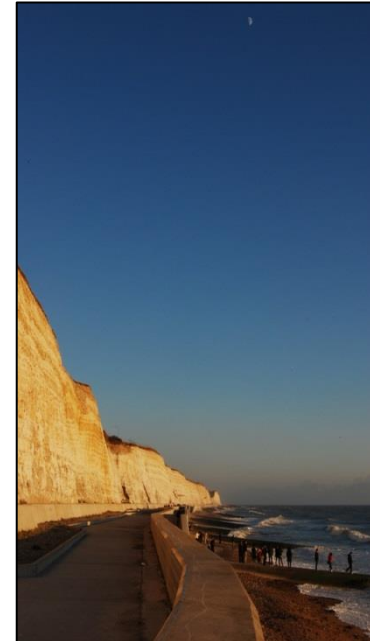
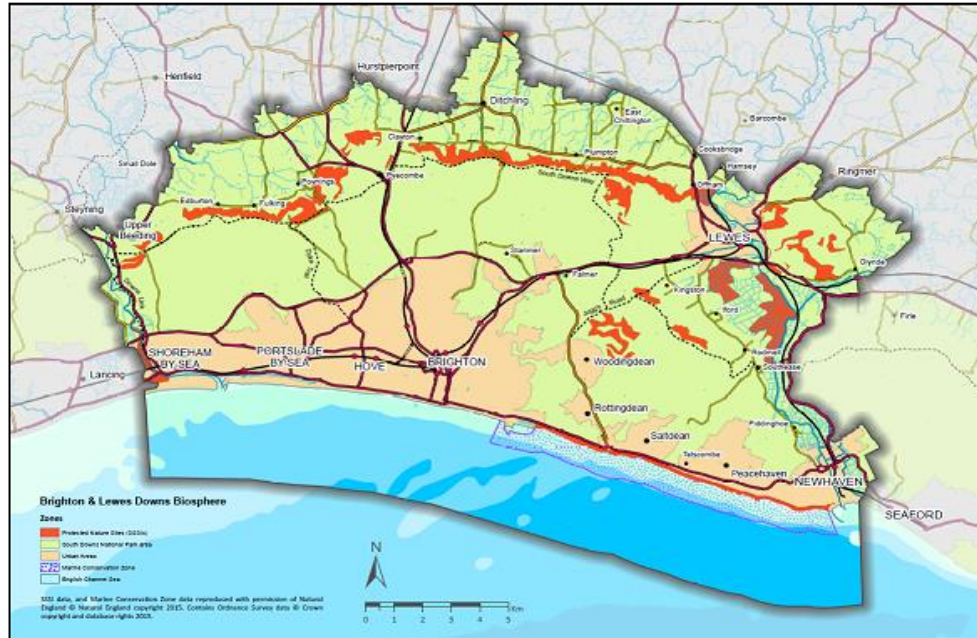
Brighton & Lewes Downs
UNESCO World Biosphere Region

Brighton & Lewes Downs Biosphere Reserve

The **vision** of the Brighton & Lewes Downs Biosphere is:

To create a world-class environment, that is economically successful and enjoyed by all – forever.

- Designated in 2014
- Area of 389 km²
- 371,500 inhabitants
- Chalk grassland, vegetated shingle and chalk reef habitats
- Urban green space networks
- Thousands of wildlife species
- 12 million visitors each year



Countryside – part of the South Downs National Park

City & Towns – including Brighton & Hove, Lewes, Newhaven and Shoreham

Coast – including the Marine Conservation Zone chalk reef

Brighton & Hove City Council is the lead partner of the Brighton & Lewes Downs Biosphere Partnership, which brings together over 40 local bodies



www.thelivingcoast.org.uk



United Nations
Educational, Scientific and
Cultural Organization



Brighton & Lewes Downs
Biosphere Reserve since 2014
Man and the Biosphere Programme



Brighton & Hove
City Council

Our Actions:

- **Nature conservation** – improving urban green spaces with wildflowers, creating ‘rain gardens’ for ground water quality and flood alleviation
- **Sustainable Socio-Economic Development** – promoting water efficiency, active travel, outdoor recreation and eco-tourism
- **Environmental Awareness** – actively engaging local people, delivering learning in schools and working with universities to build knowledge



Lynn Trapano
**Local Project
Co-ordinator**

Rich Howorth
**Biosphere Programme
Manager**



Priority Themes are:

- **Environmental awareness** - of local people, especially children and young people
- **Tourism & Recreation** - by visitors and residents, to further economic & social development
- **‘Green infrastructure’** - enhanced networks of greenspace from town to downs, which provide multiple benefits (‘ecosystem services’) from access to conservation to water management
- **Water** – improving local water quality, quantity and public awareness of our groundwater chalk aquifer, as well as coastal/marine environment
- **Research & Monitoring** – working with universities and others to improve our applied understanding of the local environment